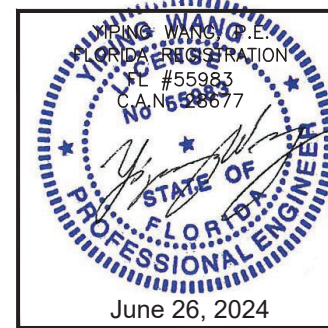


TYPICAL EXTERIOR ELEVATION

DESIGN LOADS - PSF
+60 / -80

NOTE: FOR SIZE SHOWN ABOVE OR SMALLER AS PERMITTED BY FBC.

FLORIDA APPROVAL:
FL46776



SH-LFI FIXED WINDOW - LARGE MISSILE IMPACT

KELLER MINIMAL WINDOWS S.A.
38-40 ROUTE DE WILVERDANGE
L-9911 TROISVIERGES LUXEMBOURG
Email: werner.jager@keller-minimal-windows.com

Rev. No.	Date	Drawn By	Description
1.	06.04.2024	JAMES	NEW APPLICATION

Drawn Date: 06.04.2024
Scale: AS SHOWN

DRAWING NO.
AD24-11

E1

Sheet No.
2 OF 7

MCY ENGINEERING, INC.
GLAZING CONSULTANTS

12781 MIRAMAR PKWY, STE. 301
MIRAMAR, FL 33027 P: 305.271.0117
www.MCYEngineering.com mcy@mcyengineering.com

ANCHOR TYPE 'A' - 5/16" DIA. ULTRACON BY 'DEWALT' ($F_u=177\text{KSI}$, $F_y=155\text{KSI}$) INTO 2BY WOOD BUCKS OR WOOD WOOD STRUCTURE WITH 1 1/2" MIN. PENETRATION. (HEAD/JAMB/SILL) (JAMB ONLY)

OR THROUGH 1X WOOD BUCKS INTO CONCRETE OR BLOCK 1 3/4" MIN. EMBEDMENT INTO CONCRETE 1 3/4" MIN. EMBEDMENT INTO BLOCK (HEAD/JAMB/SILL) (JAMB ONLY)

DIRECTLY INTO CONCRETE OR BLOCKS 1 3/4" MIN. EMBEDMENT INTO CONCRETE 1 3/4" MIN. EMBEDMENT INTO BLOCK (HEAD/JAMB/SILL) (JAMB ONLY)

ANCHOR TYPE 'B' - 5/16" DIA. TEKS OR SELF-DRILLING SCREWS (GRADE 5 CRS) INTO FBC APPROVED MULLIONS OR METAL STRUCTURES (3) THREADS MIN. PENETRATION BEYOND METAL SUBSTRATE. (HEAD/JAMB)

TYPICAL EDGE DISTANCE INTO CONCRETE OR GROUT FILLED BLOCKS = 2-1/2" MIN. INTO METAL STRUCTURE = 3/4" MIN. INTO WOOD STRUCTURE = 1 1/4". INTO HOLLOW BLOCK = 3 1/8"

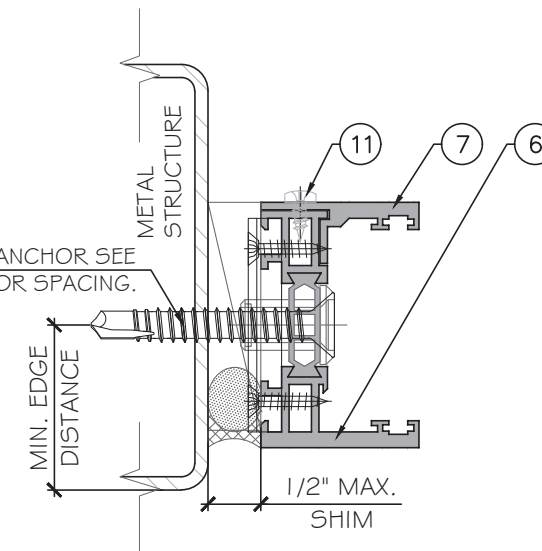
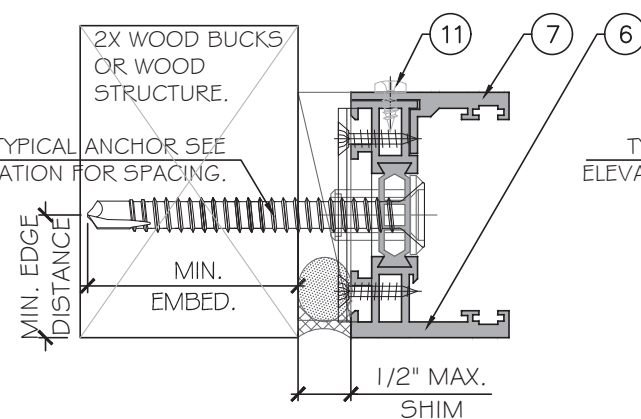
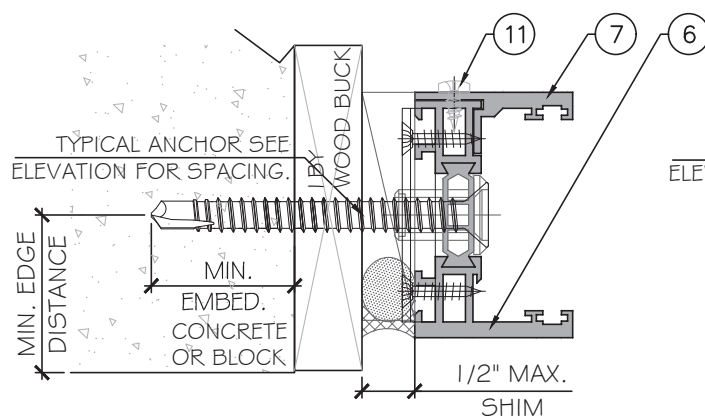
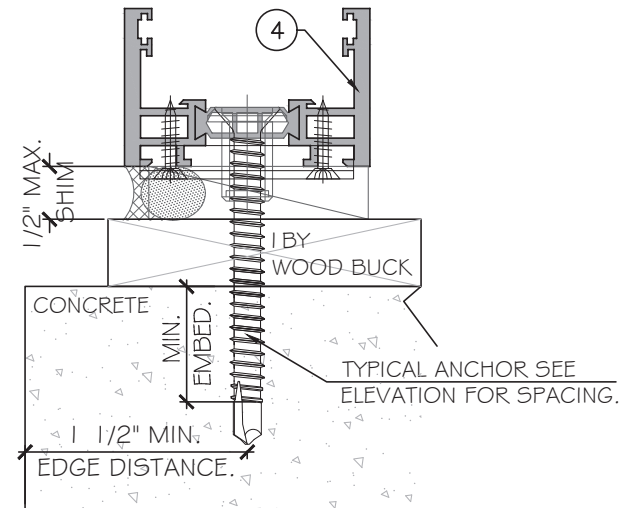
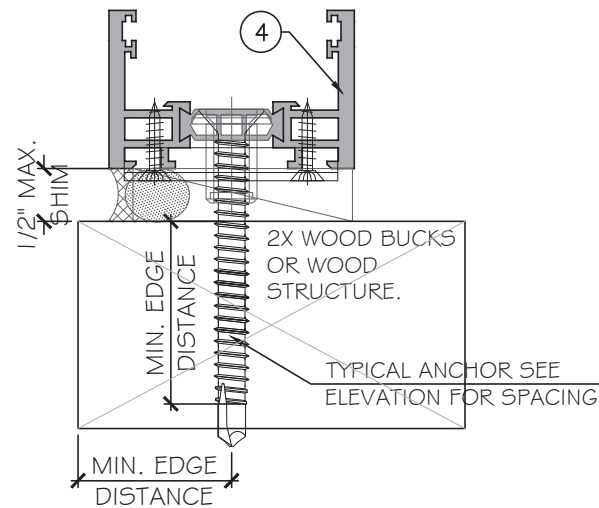
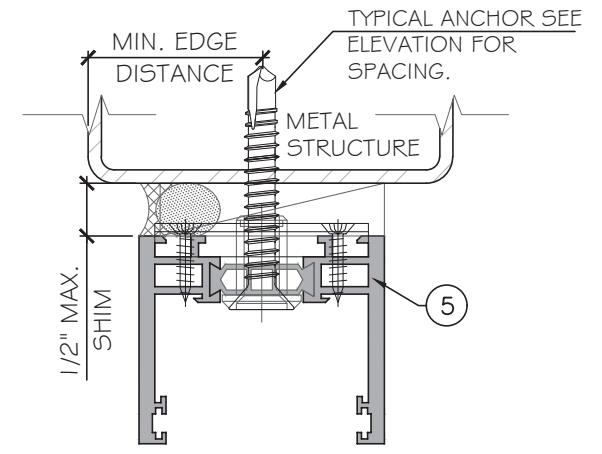
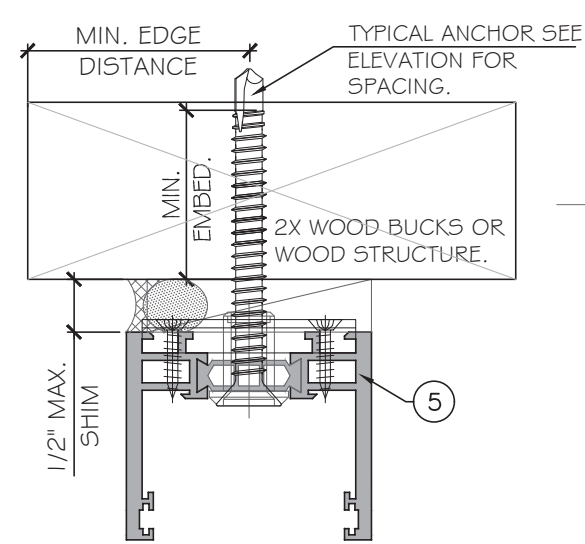
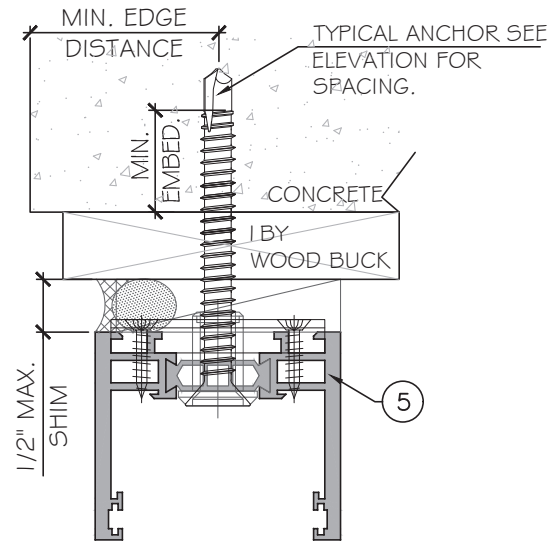
SUBSTRATE WOOD SG=0.55 MIN. CONCRETE $f'_c=3$ ksi MIN. C-90 HOLLOW/FILLED BLOCK AT JAMB $f_m=2$ ksi MIN. ALUMINUM: 1/8" MIN. THK. (G063-T5, MIN.) STEEL: 1 GGA THK. MIN. ASTM A653 GRADE 33 ($F_y=33$ ksi) MIN. STEEL IN CONTACT WITH ALUMINUM TO BE PLATED OR PAINTED.

NOTE: METAL/ WOOD STRUCTURE BY OTHERS MUST BE DESIGNED AND ANCHORED PROPERLY TO SUSTAIN LOADS IMPOSED BY GLAZING SYSTEM AND TRANSFER THEM TO THE BUILDING STRUCTURE.

(HEAD/JAMB/SILL) (JAMB ONLY)

(HEAD/JAMB/SILL) (JAMB ONLY)

(HEAD/JAMB)



FLORIDA APPROVAL:
FL46776

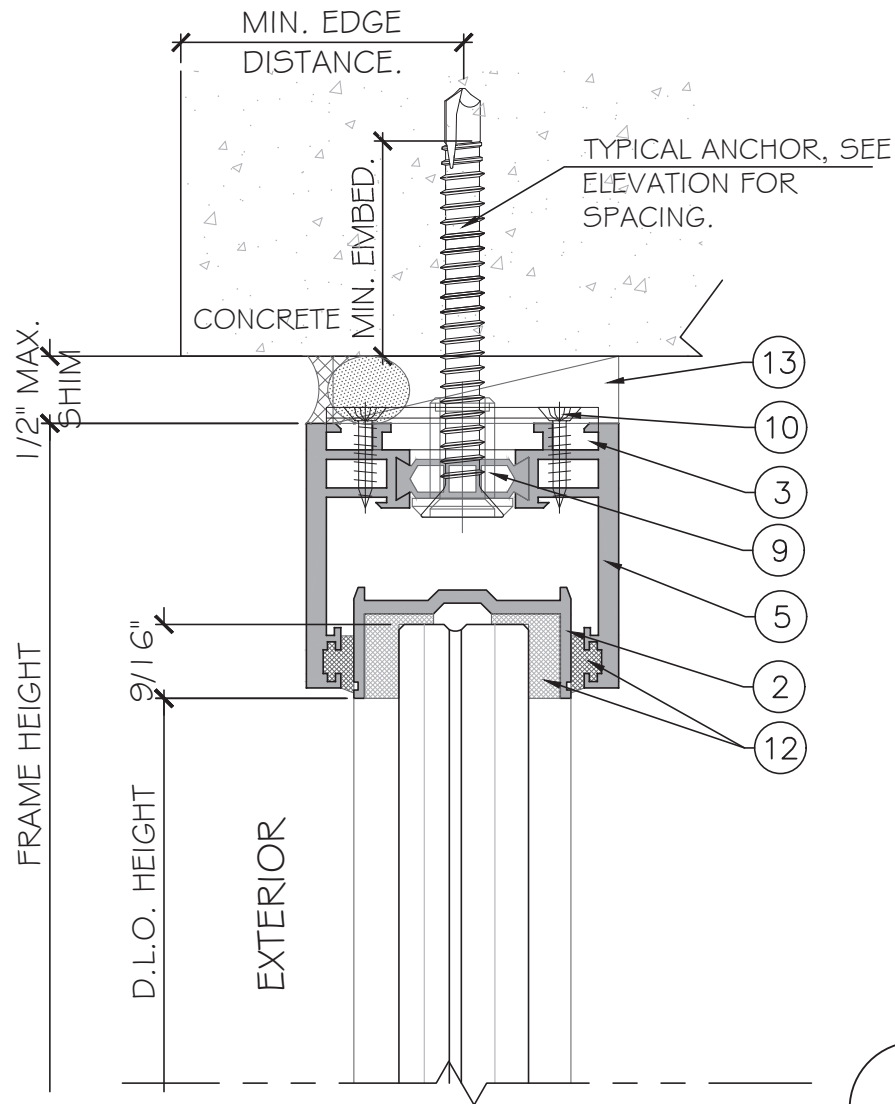


SH-LFI FIXED WINDOW - LARGE MISSILE IMPACT

KELLER MINIMAL WINDOWS S.A.
38-40 ROUTE DE WILVERDANGE
L-9911 TROISVIERGES LUXEMBOURG
Email: werner.jager@keller-minimal-windows.com

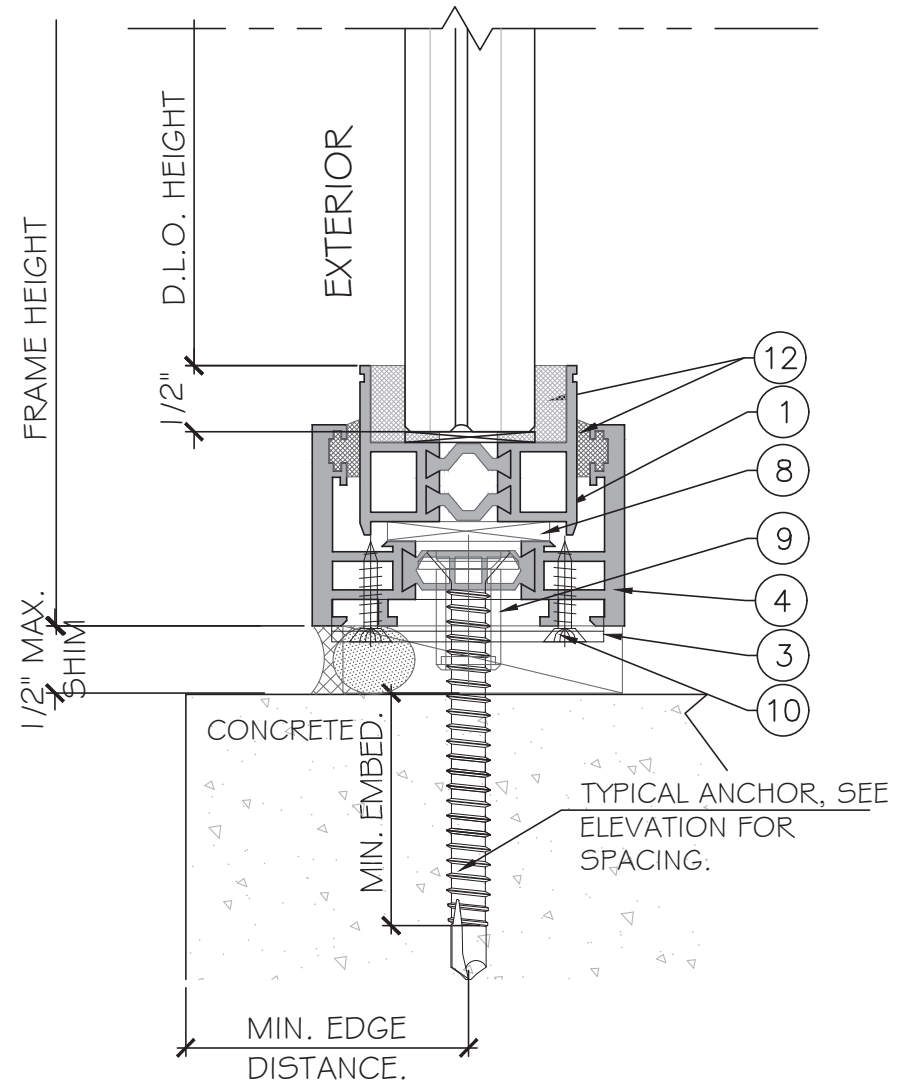
MCY ENGINEERING, INC.
GLAZING CONSULTANTS
12781 MIRAMAR PKWY, STE. 301
MIRAMAR, FL 33027 P: 305.271.0117
www.MCYEngineering.com mcy@mcyengineering.com

Drawn Date	Scale
06.04.2024	AS SHOWN
Drawn By	JAMES
Date	06.04.2024
Rev. No.	1
Description	NEW APPLICATION
Drawing No.	AD24-11
Sheet No.	A1
Page No.	3 OF 7



I
D1

DETAIL



2
D1

DETAIL

FLORIDA APPROVAL:
FL46776

YONG WANG, P.E.
FLORIDA REGISTRATION
FL #55983
C.A. No. 6528677

STATE OF FLORIDA
PROFESSIONAL ENGINEER

June 26, 2024

SH-LFI FIXED WINDOW - LARGE MISSILE IMPACT

KELLER MINIMAL WINDOWS S.A.
38-40 ROUTE DE WILVERDANGE
L-9911 TROISVIERGES LUXEMBOURG
Email: werner.jager@keller-minimal-windows.com

Rev. No.	Date	Drawn By	Description
1.	06.04.2024	JAMES	NEW APPLICATION

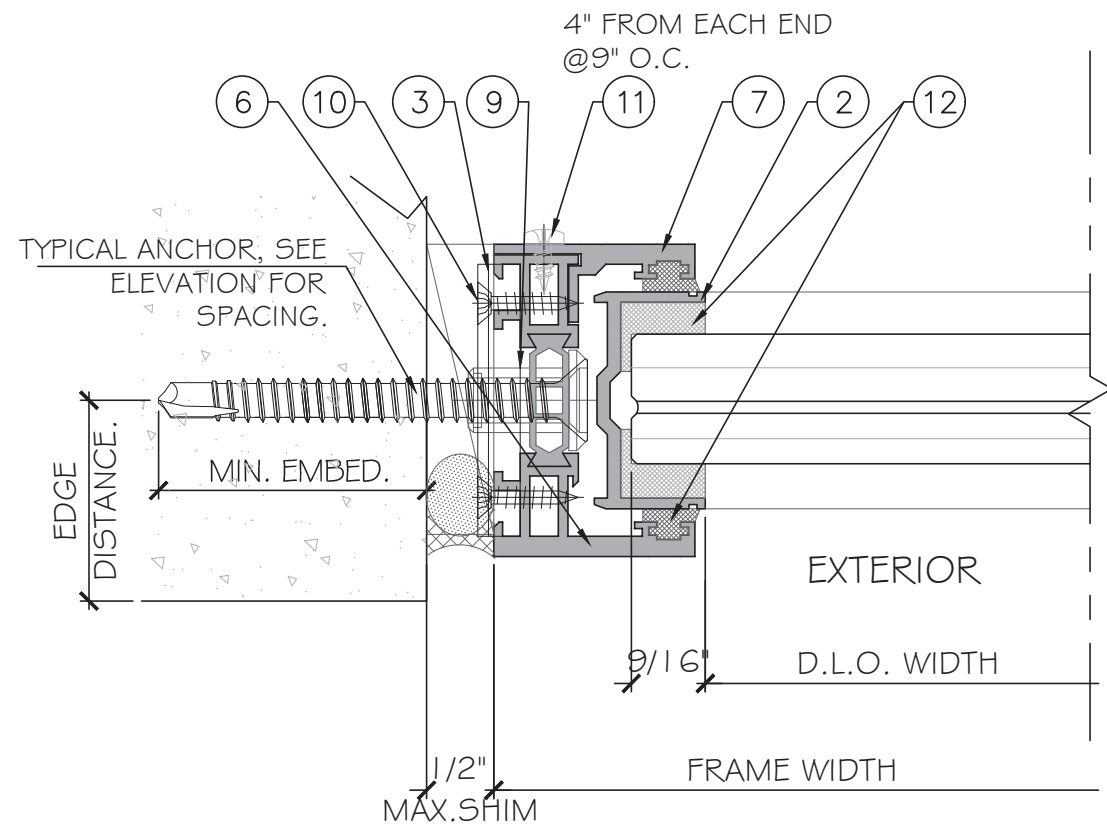
Drawn Date: 06.04.2024
Scale: AS SHOWN

DRAWING NO.
AD24-11

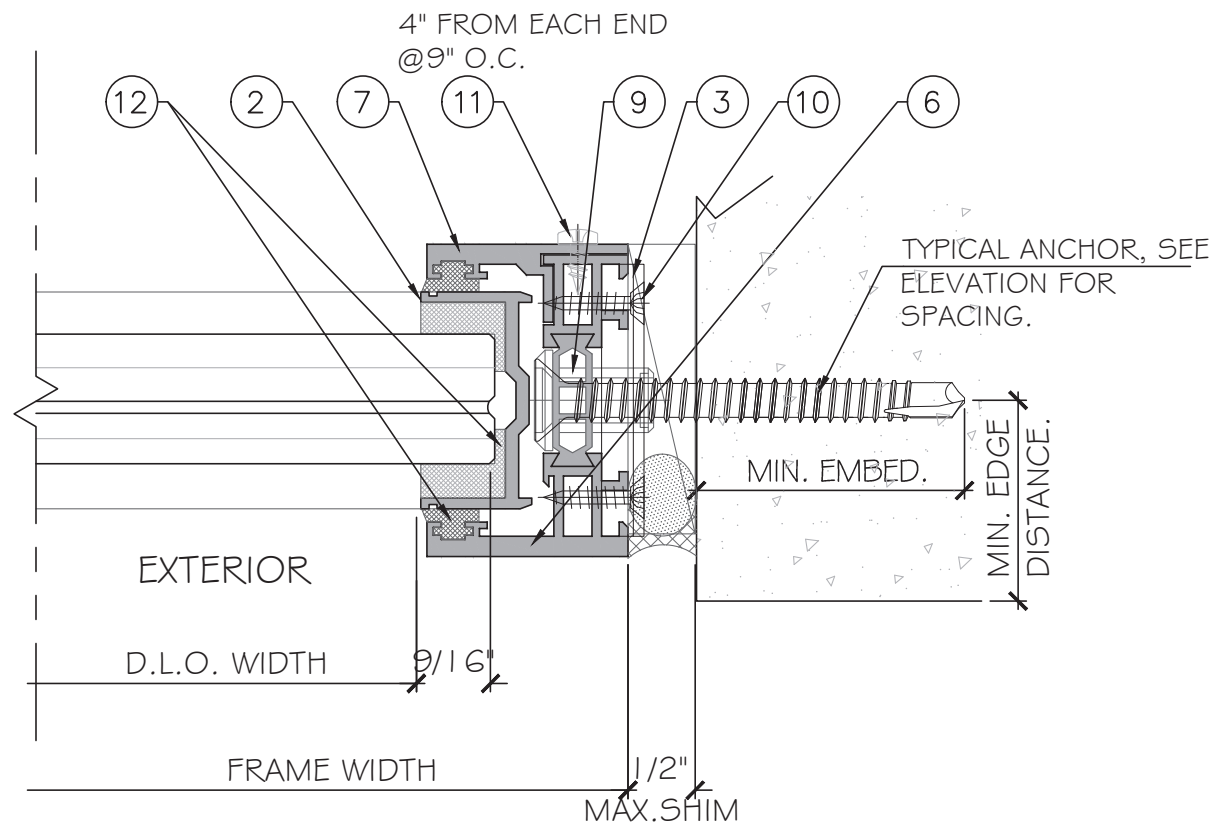
D1

Sheet No.
4 OF 7

MCY ENGINEERING, INC.
GLAZING CONSULTANTS
12781 MIRAMAR PKWY, STE. 301
MIRAMAR, FL 33027 P: 305.271.0117
www.MCYEngineering.com mcy@mcyengineering.com

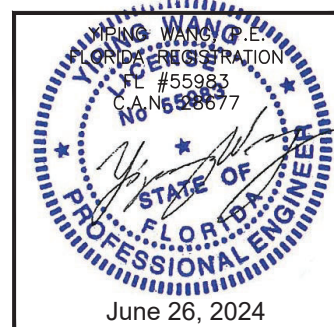


1
D2
DETAIL



2
D2
DETAIL

FLORIDA APPROVAL:
FL46776



SH-LFI FIXED WINDOW - LARGE MISSILE IMPACT

KELLER MINIMAL WINDOWS S.A.
38-40 ROUTE DE WILVERDANGE
L-9911 TROISVIERGES LUXEMBOURG
Email: werner.jager@keller-minimal-windows.com

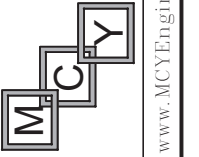
Rev. No.	Date	Drawn By	Description
1.	06.04.2024	JAMES	NEW APPLICATION

Drawn Date: 06.04.2024
Scale: AS SHOWN

DRAWING NO.
AD24-11

D2

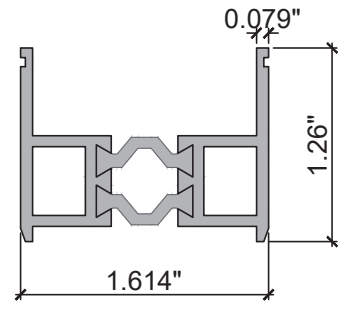
Sheet No.
5 OF 7



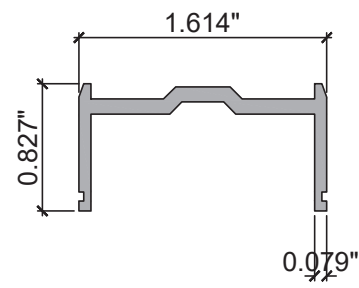
MCY ENGINEERING, INC.

GLAZING CONSULTANTS

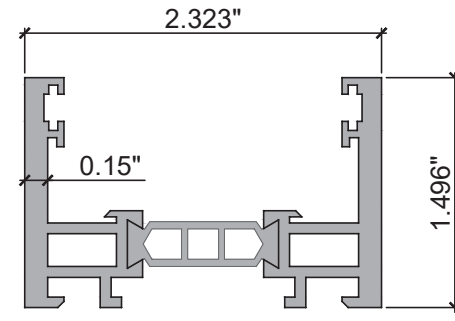
12781 MIRAMAR PKWY, STE. 301
MIRAMAR, FL 33027 P: 305.271.0117
www.MCYEngineering.com mcy@mcyengineering.com



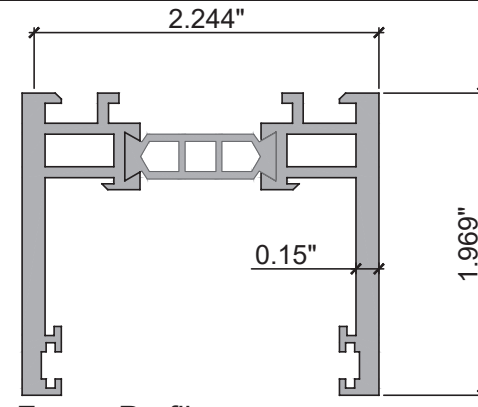
① Glassframe Profile
Alu. EN AW-6060 T66
(15-20-050-9)



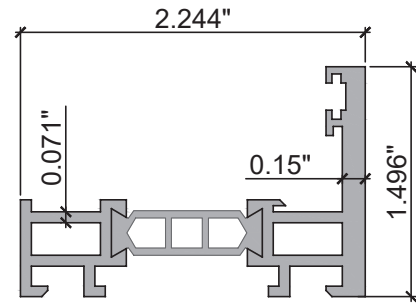
② Glassframe Profile
Alu. EN AW-6060 T66
(15-20-040-0)



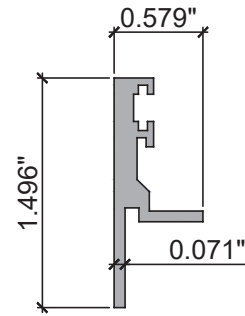
④ Frame Profile
Alu. EN AW-6060 T66 / PA66 GF25
(15-00-011-9 S)



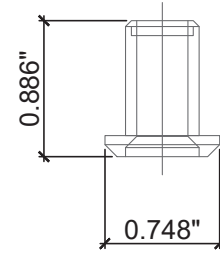
⑤ Frame Profile
Alu. EN AW-6060 T66 / PA66 GF25
(15-00-221-9 S)



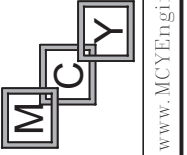
⑥ Frame Profile
Alu. EN AW-6060 T66 /
PA66 GF25
(15-00-021-9 S)



⑦ Frame Profile
Alu. EN AW-6060 T66
(15-00-020-3 S)



⑧ Screw sleeve
PA6
(25-15-012)

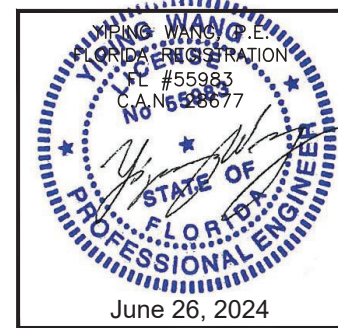


MCY ENGINEERING, INC.
GLAZING CONSULTANTS
12781 MIRAMAR PKWY, STE. 301
MIRAMAR, FL 33027 P: 305.271.0117
www.MCYEngineering.com mcy@mcyengineering.com

SH-LFI FIXED WINDOW - LARGE MISSILE IMPACT

KELLER MINIMAL WINDOWS S.A.
38-40 ROUTE DE WILVERDANGE
L-9911 TROISVIERGES LUXEMBOURG
Email: werner.jager@keller-minimal-windows.com

FLORIDA APPROVAL:
FL46776



Rev. No.	Date	Drawn By	Description
1.	06.04.2024	JAMES	NEW APPLICATION

Drawn Date: 06.04.2024 Scale: AS SHOWN

DRAWING NO. AD24-11

Sheet No. P1

6 OF 7

